
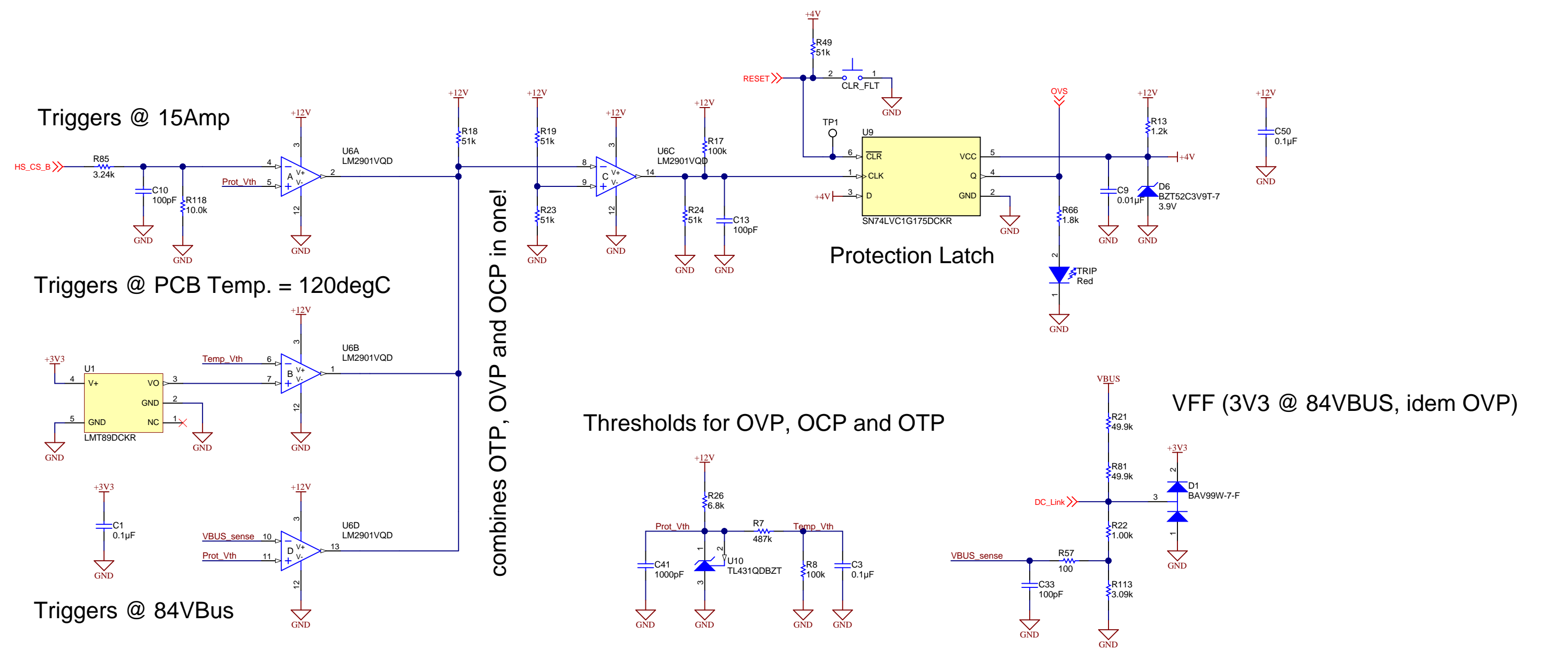


Note: The TIDA-00210 design is using two TIDA-00365 boards

Texas Instruments and/or its licensors do not warrant the accuracy or completeness of this specification or any information contained therein. Texas Instruments and/or its licensors do not warrant that this design will meet the specifications, will be suitable for your application or fit for any particular purpose, or will operate in an implementation. Texas Instruments and/or its licensors do not warrant that the design is production worthy. You should completely validate and test your design implementation to confirm the system functionality for your application.

Orderable: N/A	Designed for: Public Release	Mod. Date: 5/25/2016
TID #: TIDA-00365	Project Title: Full Bridge Power Stage	
Number: TIDA-00365	Rev: E1	Sheet Title:
SVN Rev: Version control disabled	Assembly Variant: Production	Sheet: 1 of 3
Drawn By:	File: CoverSheet.SchDoc	Size: B
Engineer: V.Pizzolante	Contact: http://www.ti.com/support	

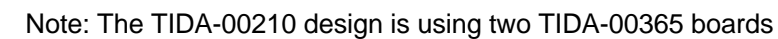
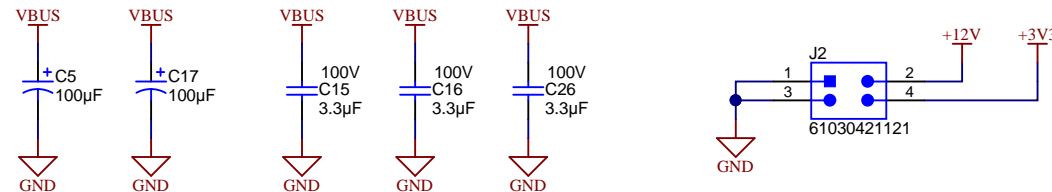
 **TEXAS
INSTRUMENTS**
<http://www.ti.com>
© Texas Instruments 2016




combines OTP, OVP and OCP in one!

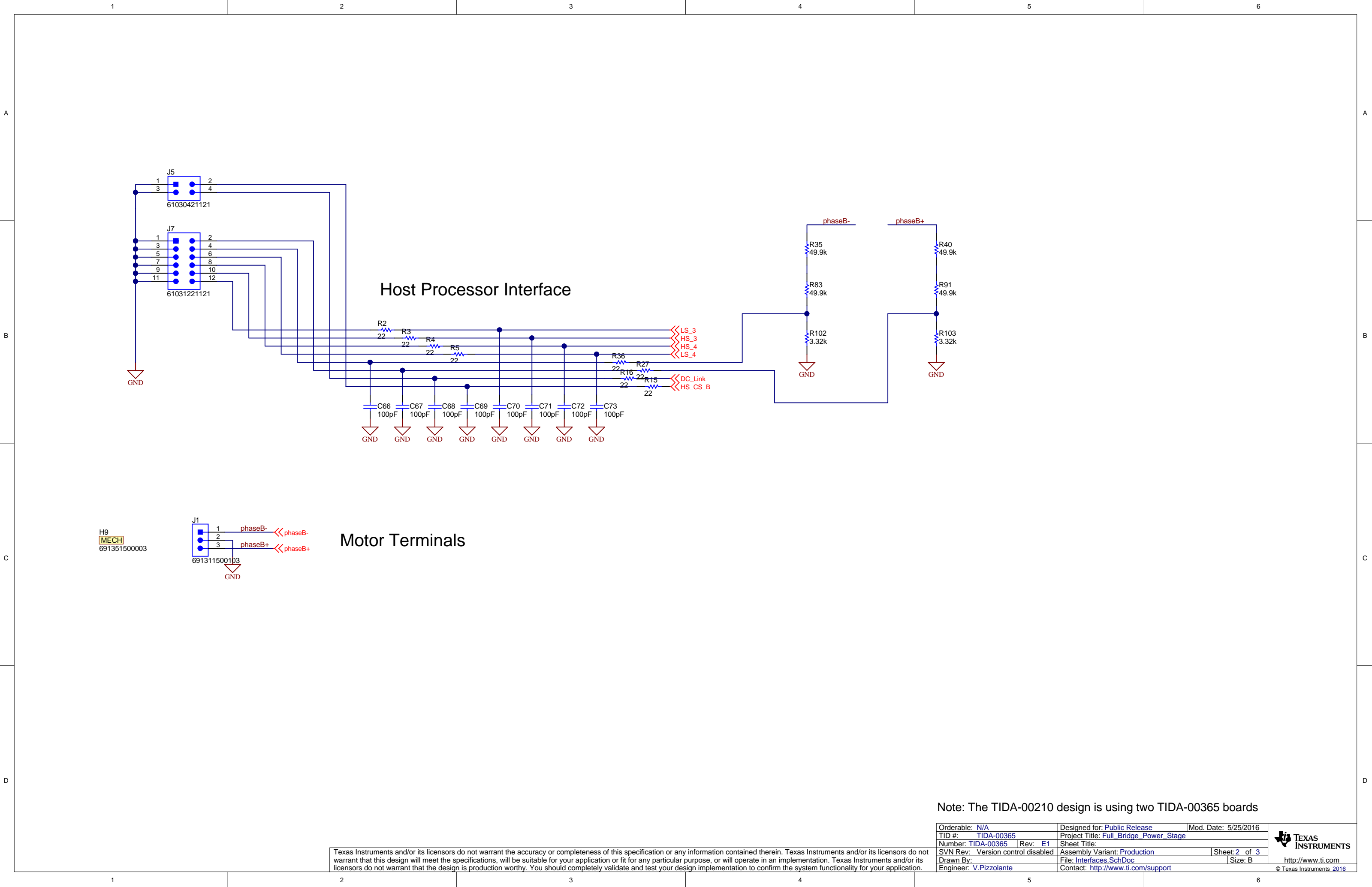
Note: The TIDA-00210 design is using two TIDA-00365 boards

H10
MECH
691352510002



Orderable: N/A	Designed for: Public Release	Mod. Date: 5/25/2016	
TID #: TIDA-00365	Project Title: Full_Bridge_Power_Stage		
Number: TIDA-00365	Rev: E1	Sheet Title:	
SVN Rev: Version control disabled	Assembly Variant: Production	Sheet: 2 of 3	
Drawn By:	File: Power Supply_SchDoc	Size: B	
Engineer: V.Pizzolante	Contact: http://www.ti.com/support		http://www.ti.com © Texas Instruments 2016

Texas Instruments and/or its licensors do not warrant the accuracy or completeness of this specification or any information contained therein. Texas Instruments and/or its licensors do not warrant that this design will meet the specifications, will be suitable for your application or fit for any particular purpose, or will operate in an implementation. Texas Instruments and/or its licensors do not warrant that the design is production worthy. You should completely validate and test your design implementation to confirm the system functionality for your application.



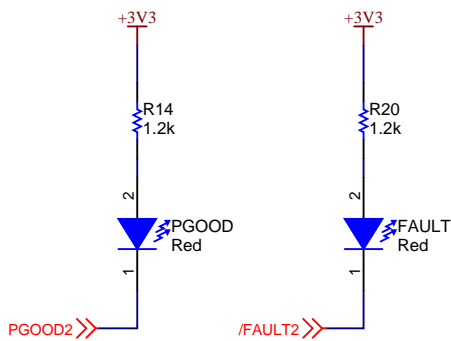
Note: The TIDA-00210 design is using two TIDA-00365 boards

Texas Instruments and/or its licensors do not warrant the accuracy or completeness of this specification or any information contained therein. Texas Instruments and/or its licensors do not warrant that this design will meet the specifications, will be suitable for your application or fit for any particular purpose, or will operate in an implementation. Texas Instruments and/or its licensors do not warrant that the design is production worthy. You should completely validate and test your design implementation to confirm the system functionality for your application.

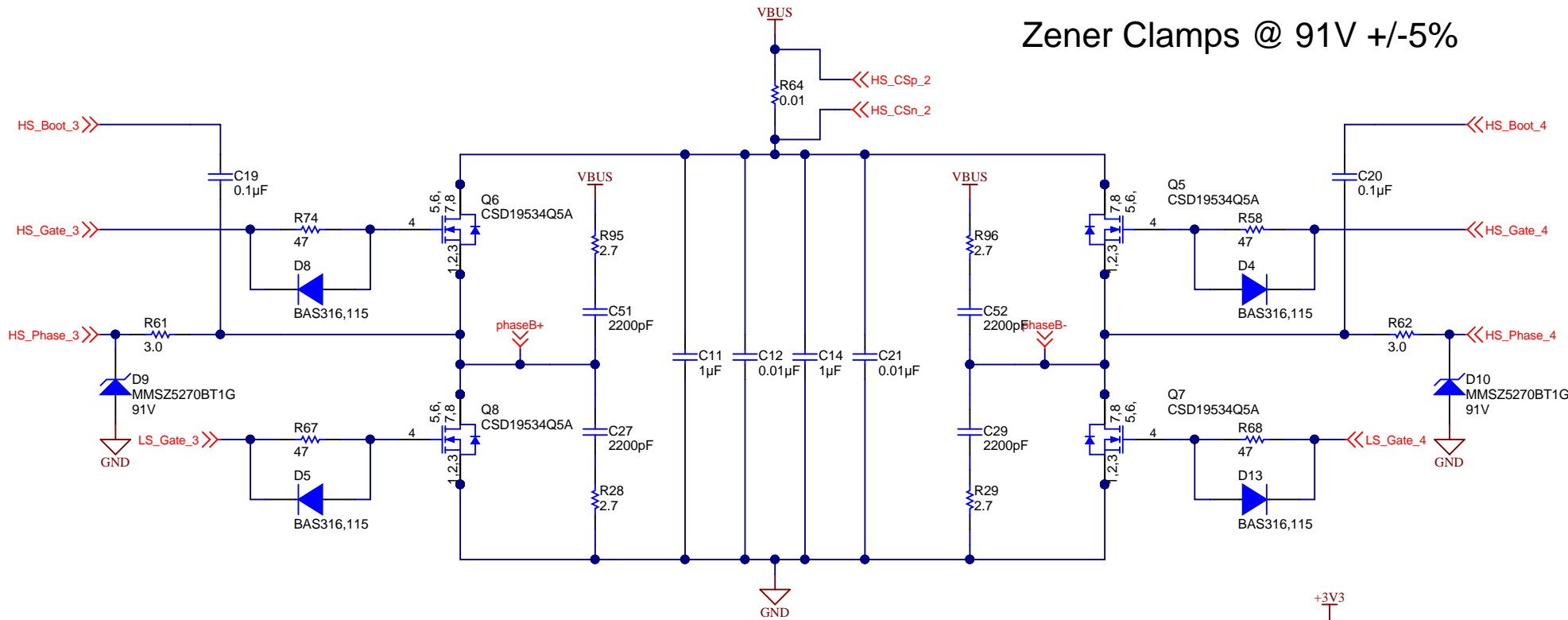
Orderable: N/A	Designed for: Public Release	Mod. Date: 5/25/2016
TID #: TIDA-00365	Project Title: Full Bridge Power Stage	
Number: TIDA-00365	Rev: E1	Sheet Title:
SVN Rev: Version control disabled	Assembly Variant: Production	Sheet: 2 of 3
Drawn By:	File: Interfaces.SchDoc	Size: B
Engineer: V.Pizzolante	Contact: http://www.ti.com/support	



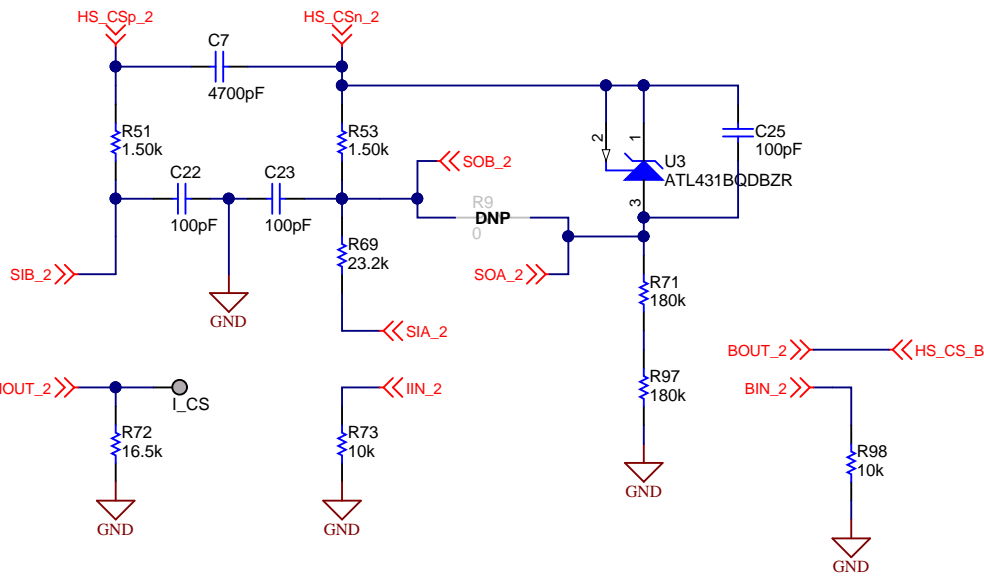
Indicator LEDs



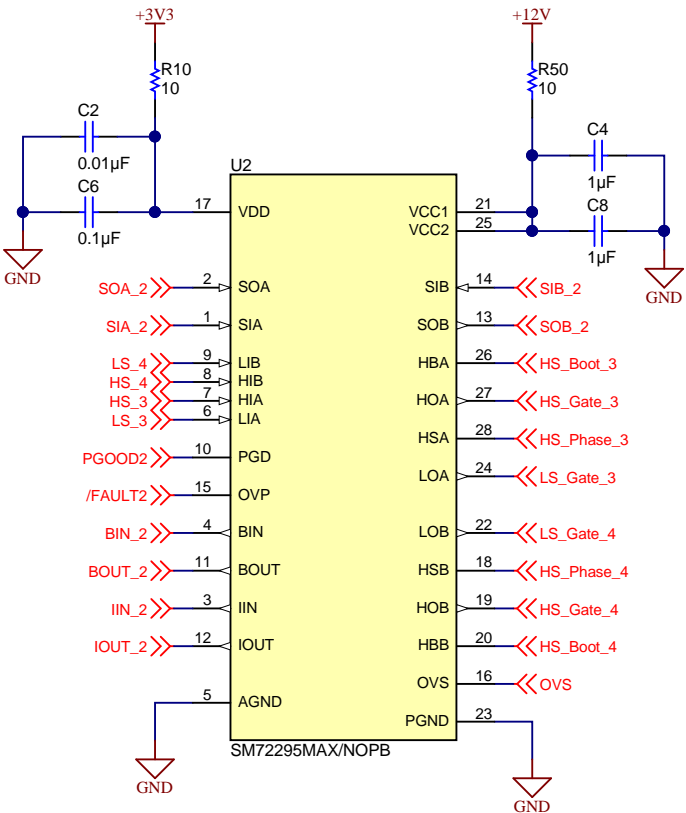
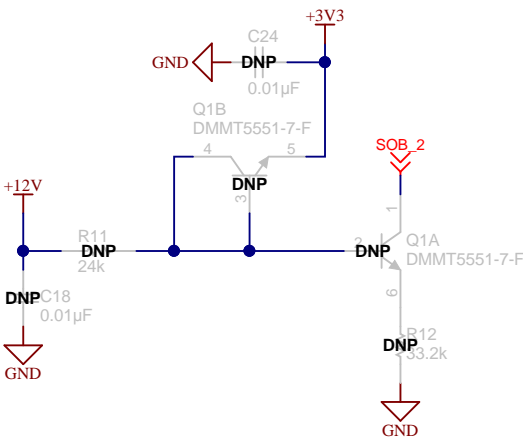
Zener Clamps @ 91V +/-5%



HS Current Sense: 3.3V @ 15Amp



Optional Current Offset (DNP)



Note: The TIDA-00210 design is using two TIDA-00365 boards

